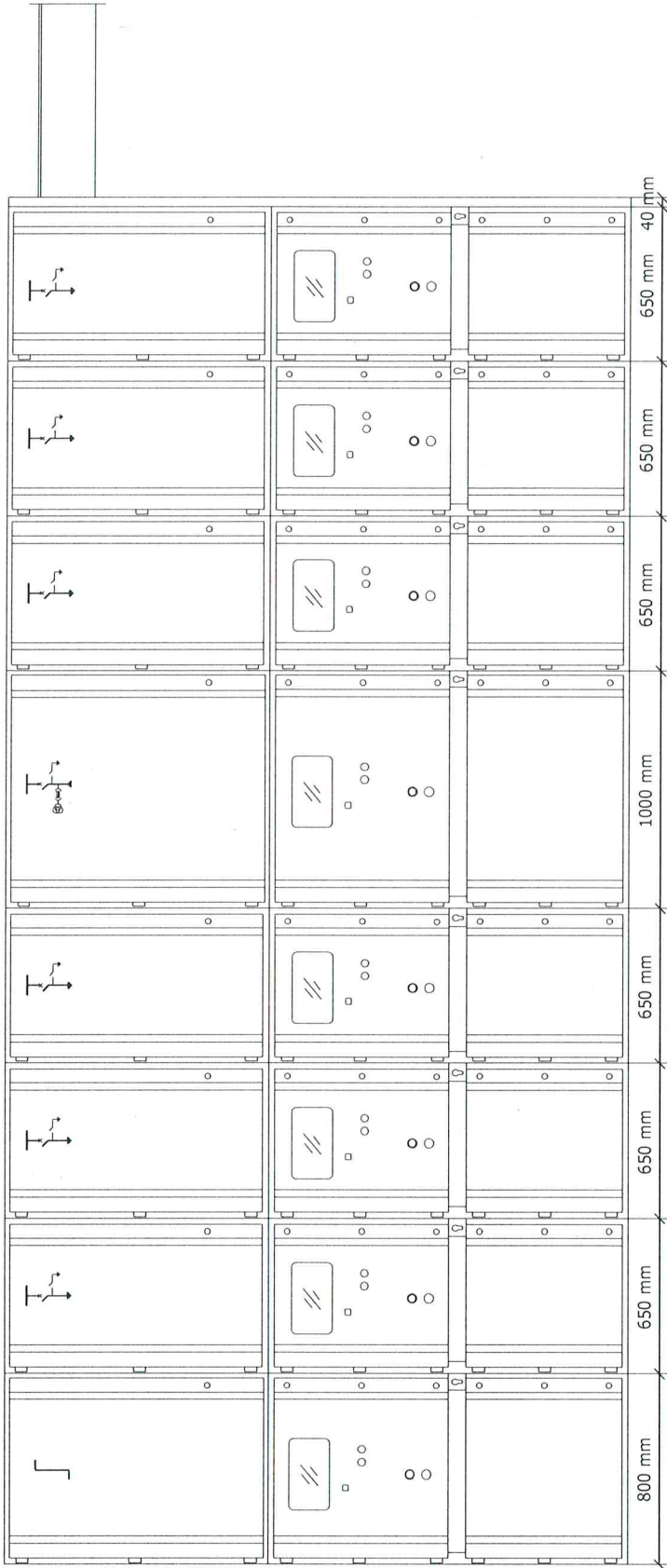


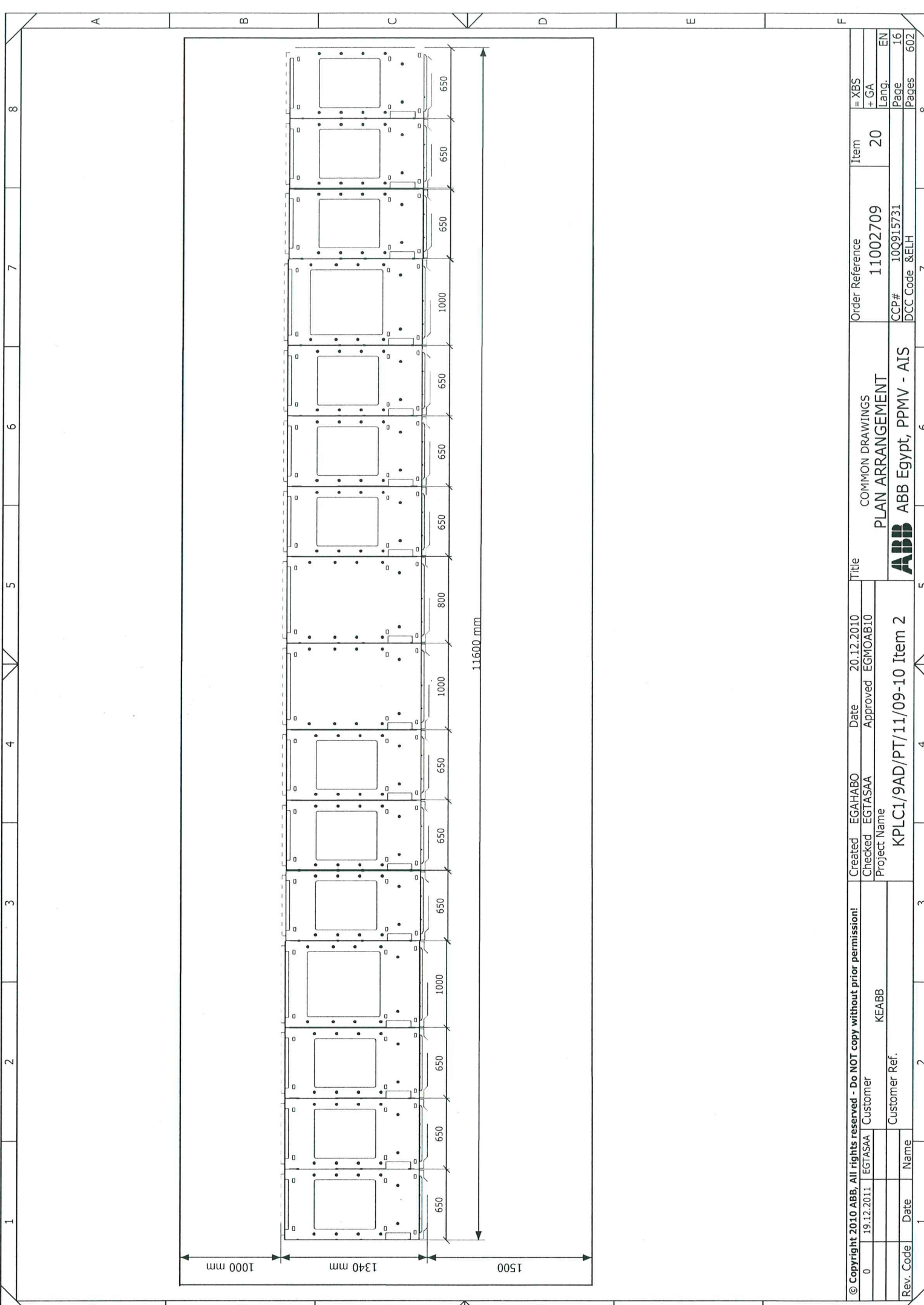
K1	K2	K3	K4	K5	K6	K7	K8
Outgoing	Outgoing	Outgoing	Incoming	Outgoing	Outgoing	Outgoing	Bus Coupler

© Copyright 2010 ABB, All rights reserved - Do NOT copy without prior permission!		Created	EGAHABO	Date	20.12.2010	Title	COMMON DRAWINGS		Order Reference	Item	= XBS
0	EGTASAA	Checked	EGTASAA	Approved	EGMOAB10	FRONT VIEW		11002709	20	+ GA	
		Project Name		KPLC1/9AD/PT/11/09-10 Item 2		ABB ABB Egypt, PMV - AIS		CCP#	10Q915731	Lang.	EN
Rev. Code	Date	Name	Customer Ref.		DCC Code & ELH		Page	14	Pages	602	

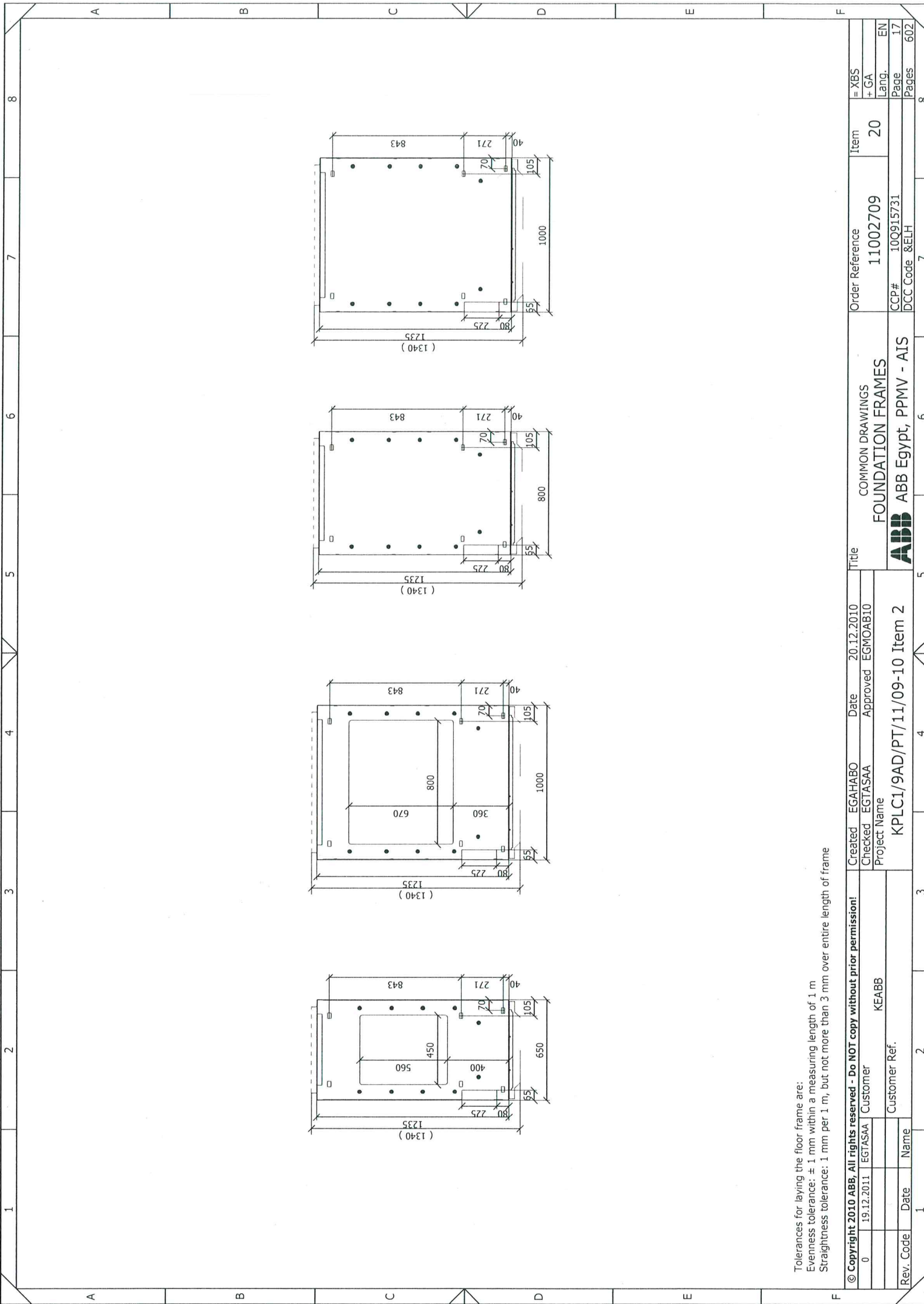


K9	K10	K11	K12	K13	K14	K15	K16
Bus Riser	Outgoing	Outgoing	Outgoing	Incoming	Outgoing	Outgoing	Outgoing

© Copyright 2010 ABB, All rights reserved - Do NOT copy without prior permission!		Created	EGAHABO	Date	20.12.2010	Title	COMMON DRAWINGS		Order Reference	Item
0	19.12.2011	Checked	EGTASAA	Approved	EGMOAB10		FRONT VIEW		11002709	20
Rev. Code	Date	Name	Customer Ref.			KPLC1/9AD/PT/11/09-10 Item 2		CCP# 100915731		Page 15
						ABB Egypt, PPMV - ALS		DCC Code & ELH		Pages 602



© Copyright 2010 ABB, All rights reserved - Do NOT copy without prior permission!		Created	EGAHABO	Date	20.12.2010	Title	COMMON DRAWINGS PLAN ARRANGEMENT		Order Reference	Item	= XBS + GA
0	19.12.2011	Checked	EGTASAA	Approved	EGMOAB10	KPLC1/9AD/PT/11/09-10 Item 2		11002709	20	Lang.	EN
Rev. Code	Date	Name	Project Name			ABB		CCP#	100915731	Page	I6
			KPLC1/9AD/PT/11/09-10			ABB		DCC Code	&ELH	Pages	602



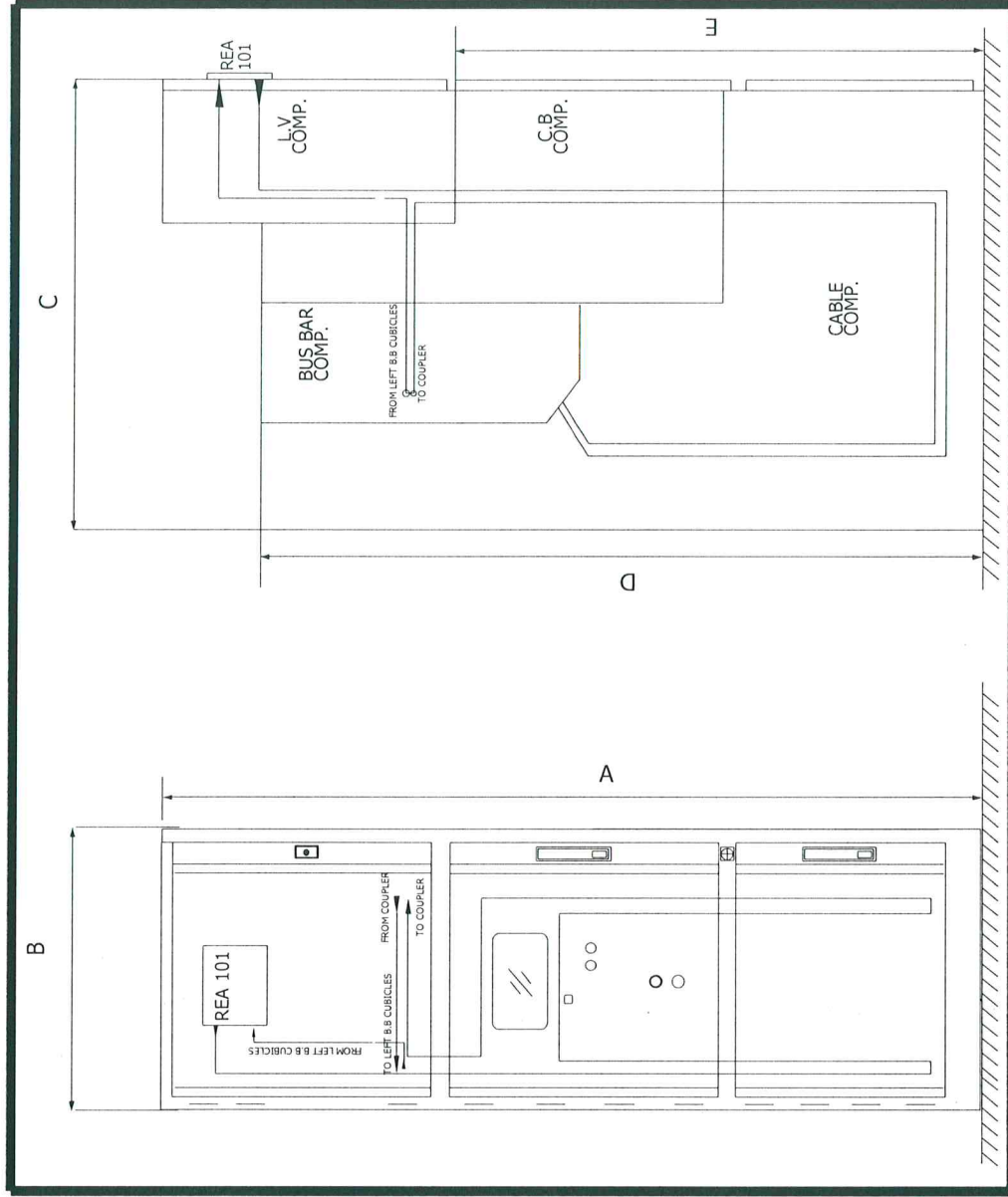
Tolerances for laying the floor frame are:
 Evenness tolerance: ± 1 mm within a measuring length of 1 m
 Straightness tolerance: 1 mm per 1 m, but not more than 3 mm over entire length of frame

© Copyright 2010 ABB, All rights reserved - Do NOT copy without prior permission!	Created	EGAHABO	Date	20.12.2010	Title	COMMON DRAWINGS	Order Reference	Item	= XBS
0	19.12.2011	EGTASAA	Checked	EGTASAA	Approved	EGMOAB10	11002709	20	+ GA
			Project Name	FOUNDATION FRAMES					
			Customer	KEABB					
			Customer Ref.	KPLC1/9AD/PT/11/09-10 Item 2					
Rev. Code	Date	Name							
			CCP#	100915731		DCC Code	8&ELH		
			Page	17		Pages	602		
			Lang.	EN					
			Item	20					

INCOMING LAYOUT :

Dimension	12KV
A	2595 mm
B	800&1000mm
C	1340 mm
D	2100 mm
E	1495 mm

- _____ Fiber route through L.V Comp.
- _____ Fiber route through C.B Comp.
- _____ Fiber route through Cable Comp.
- _____ Fiber route through B.B Comp.

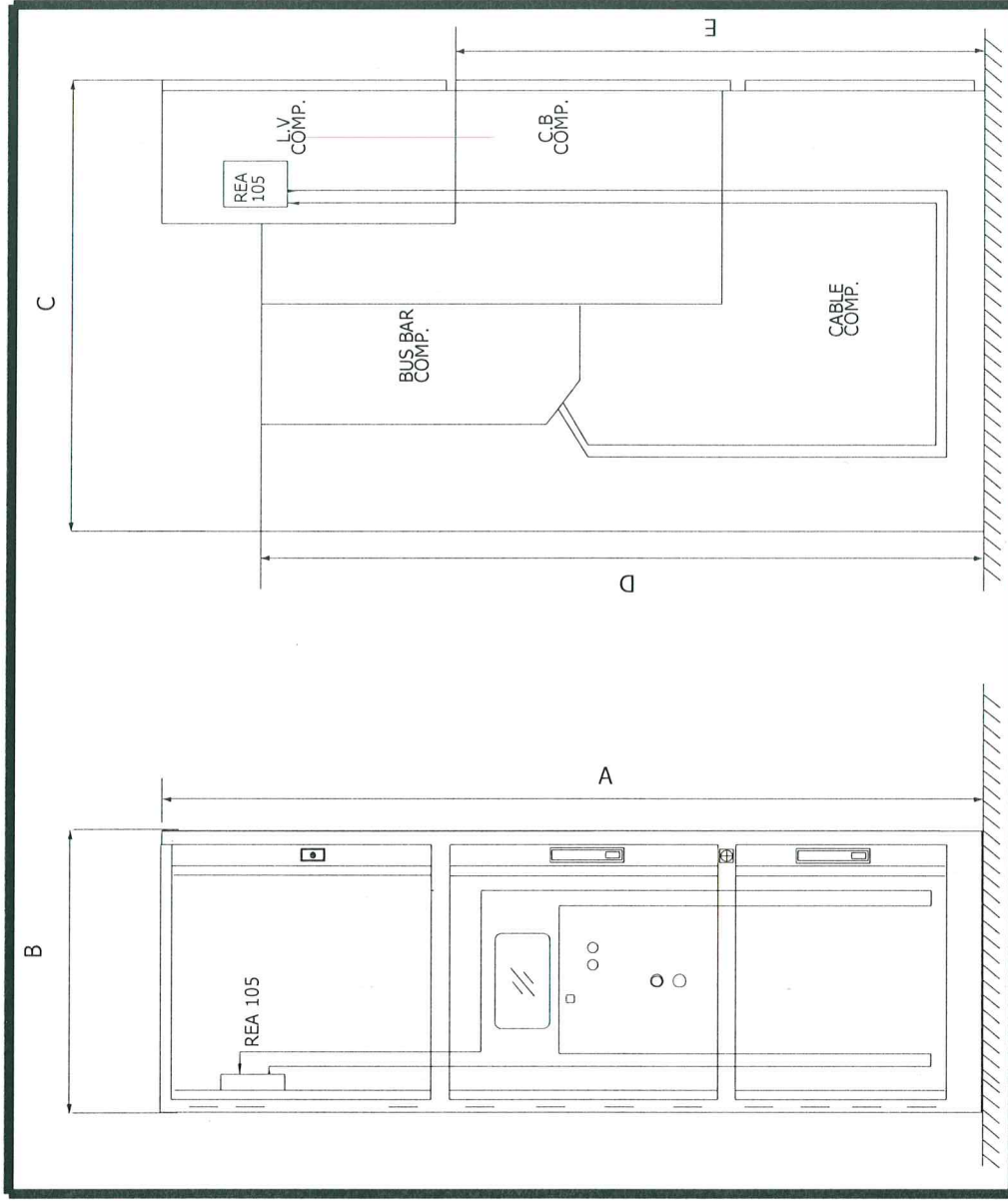


© Copyright 2010 ABB, All rights reserved - Do NOT copy without prior permission!		Created	EGAMELBI	Date	28.02.2011	Title	COMMON DRAWINGS		Order Reference	Item	= XBS
0	19.12.2011	Checked	EGMAAB	Approved	EGMOAB10	INCOMING ARC PROTECTION		11002709	20	+ ARC	
		Project Name		KPLC1/9AD/PT/11/09-10 Item 2		ABB		CCP#	100915731	Lang.	EN
		Customer Ref.		KEABB		ABB		DCC Code	&EFS	Page	18
Rev. Code	Date	Name							Pages	602	

FEEDER LAYOUT :

Dimension	12KV
A	2590 mm
B	650 mm
C	1340 mm
D	2100 mm
E	1495 mm

- _____ Fiber route through L.V Comp.
- _____ Fiber route through C.B Comp.
- _____ Fiber route through Cable Comp.



© Copyright 2010 ABB, All rights reserved - Do NOT copy without prior permission!		Created	EGAMELB1	Date	28.02.2011	Title	COMMON DRAWINGS	Order Reference	Item	= XBS	
0	19.12.2011	Checked	EGMAAB	Approved	EGMOAB10	OUTGOING ARC PROTECTION		11002709	20	+ ARC	
		Project Name		KPLC1/9AD/PT/11/09-10		ABB		CCP#	100915731	Lang.	EN
		Customer		KEABB		ABB		DCC Code	&EFS	Page	19
		Customer Ref.		Item 2		ABB				Pages	602